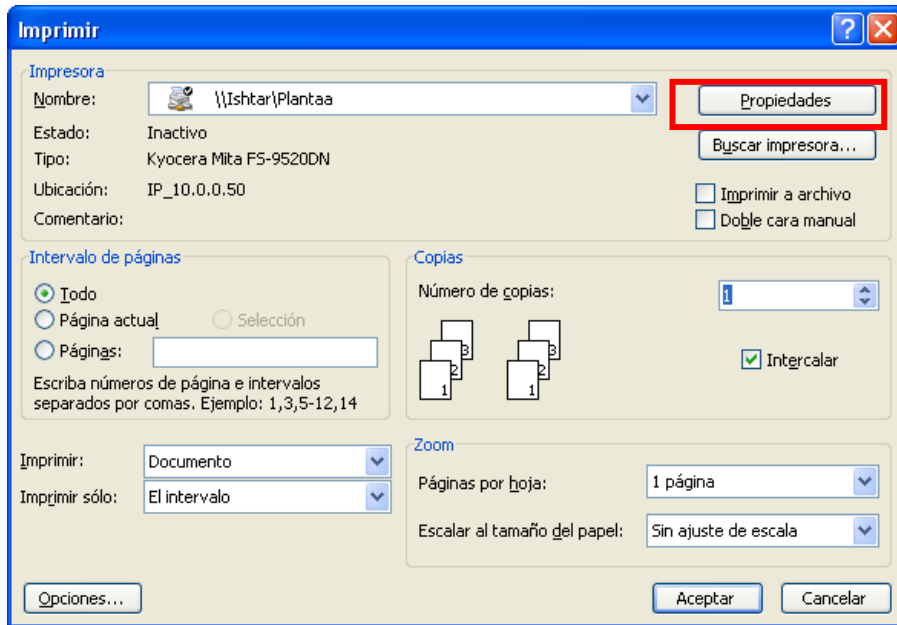
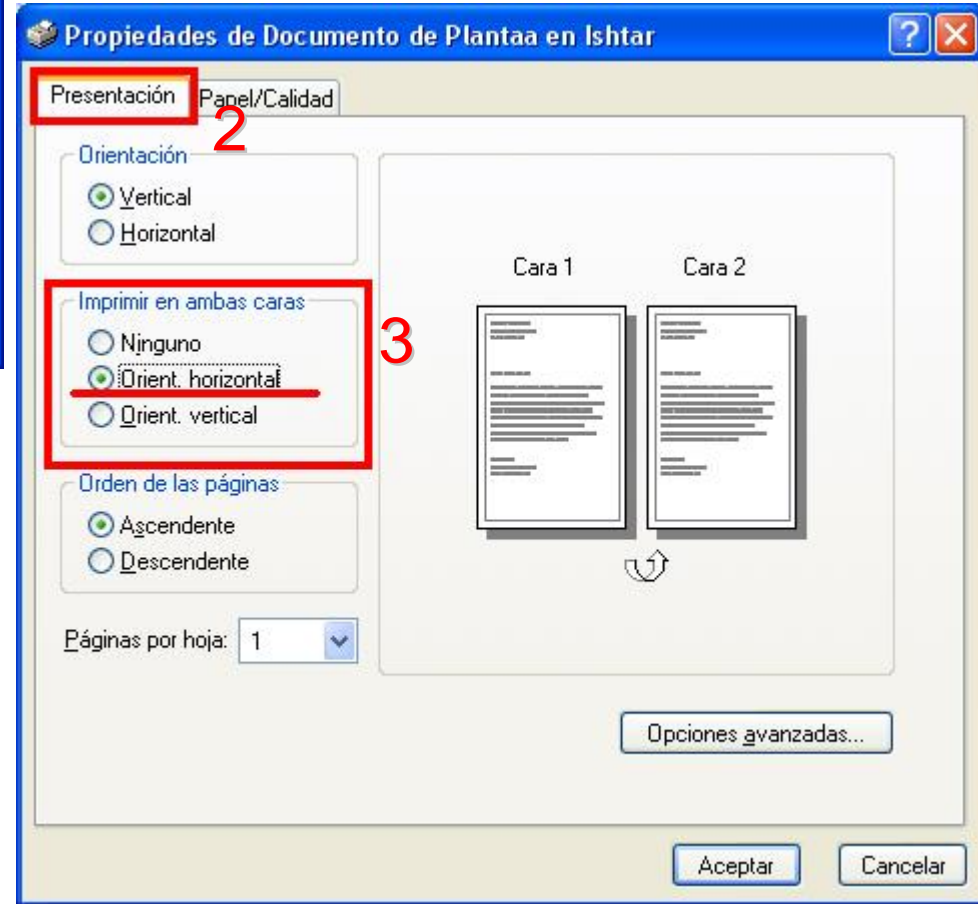


# Impresión ambas caras



1



# Impresión bandeja manual (bandeja multifunción)

The image shows a Windows printer configuration window titled "Imprimir" (Print) for a printer named "\\Ishtar\PlantaA". The printer is a Kyocera Mita FS-9520DN. The "Propiedades" (Properties) button is highlighted with a red box and a red number "1".

The "Propiedades de L" (Properties of L) dialog is open, showing the "Presentación" (Presentation) tab. The "Papel/T" (Paper/T) option is highlighted with a red box and a red number "2".

The "Bandeja multifunción" (Multifunction Tray) is highlighted with a red box and a red number "3" in the list of trays on the right side of the dialog.

The "Intervalo de páginas" (Page Range) section has "Todo" (All) selected. The "Copias" (Copies) section shows "Número de copias" (Number of copies) set to 1. The "Zoom" section shows "Páginas por hoja" (Pages per sheet) set to 1 página.

Buttons for "Opciones..." (Options...), "Aceptar" (Accept), and "Cancelar" (Cancel) are visible at the bottom.